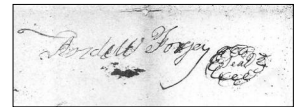


First Generation

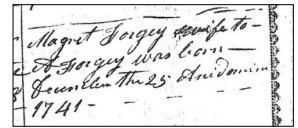
1. **Andrew FORGEY**, son of FORGEY (-), was born on 4 February 1732 in Ireland. He married **Margaret REYNOLDS** in 1760 (approx.) in Ireland. Before 1800 he was in New Providence Presbyterian Church, Hawkins Co., Tn. He died in 1809 in Hawkins Co., Tn.

Margaret REYNOLDS, daughter of Hugh REYNOLDS (-) and Mary DUER (-), was born on 25 December 1741 in Creggan Parish, Co. Louth, Ireland. She died on 1 June 1828 in Hawkins County, Tennessee. She and Andrew FORGEY had the following children:

- +2 James FORGEY (1764-1837)
- +3 Hugh FORGEY (1766?-bef1830)
- +4 Nancy FORGEY (1768-1837)
- +5 Margaret FORGEY (1774-1847)
- +6 Andrew FORGEY (1776-1830)
- +7 John FORGEY (1777?-)
- +8 Sally FORGEY (1779-)



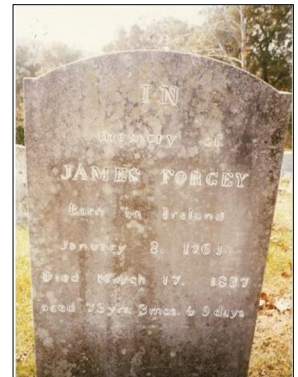
Andrew FORGEY, Signature



Spouse: Margaret REYNOLDS

Second Generation

2. **James FORGEY**, son of Andrew FORGEY and Margaret REYNOLDS, was born on 8 January 1764 in Ireland. He died on 17 March 1837 in Hawkins Co., Tn.



James FORGEY

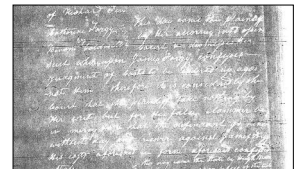
3. **Hugh FORGEY**, son of Andrew FORGEY and Margaret REYNOLDS, was born in 1766 (approx.) in Ireland. He married **Catherine FISHER** in 1788 (approx.). He died between 1809 and 1830 in Hawkins County, Tennessee.

Catherine FISHER was the daughter of Archibald FISHER (-). She and Hugh FORGEY had the following children:

- +9 Archibald FORGEY (1790-1865?)
- +10 Andrew FORGEY (1794-1879)
- +11 James A. FORGEY (1803?-bef1870)
- +12 Mary "Polly" FORGEY (1800-)



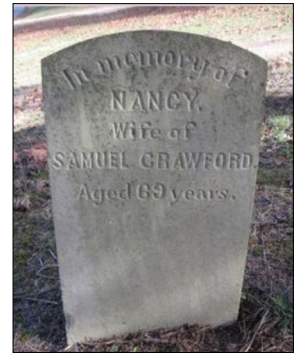
Hugh FORGEY

Spouse: Catherine FISHER,
Catharine Forge vs. Benoni
Coldwell 1814 Hawkins County,
TN

4. **Nancy FORGEY**, daughter of Andrew FORGEY and Margaret REYNOLDS, was born on 13 August 1768 in Ireland. She married **Samuel CRAWFORD** in 1788 (approx.) in Hawkins Co., TN. She died on 13 March 1837 in Knox Co., TN.

Samuel CRAWFORD was born on 5 June 1758. He died on 14 May 1822 in Knox County, Tennessee. He and Nancy FORGEY had the following children:

- +13 Andrew CRAWFORD (1790-)
- +14 Samuel Reynolds CRAWFORD (1792?-)
- +15 Thomas CRAWFORD (1794-)
- +16 Margaret CRAWFORD (1796-)
- +17 Polly CRAWFORD (1798-)
- +18 Hugh Forgey CRAWFORD (1806-)
- +19 Nancy CRAWFORD (-)
- +20 Eleanor S. CRAWFORD (1810-)



Nancy FORGEY

5. **Margaret FORGEY**, daughter of Andrew FORGEY and Margaret REYNOLDS, was born on 16 June 1774 in Pennsylvania. She died on 13 February 1847 in Knox Co., Tn. At some point she married **Henry ROBERTS**. At some point she married **HICKLE**.

Henry ROBERTS and Margaret FORGEY had the following children:

- +21 Rebecca ROBERTS (1803-)
- +22 Andrew ROBERTS (-)

6. **Andrew FORGEY**, son of Andrew FORGEY and Margaret REYNOLDS, was born on 4 June 1776 in Hawkins Co. He died on 18 August 1830 in Hawkins Co. At some point he married **Hannah**. At some point he married **Isabella**.

Hannah and Andrew FORGEY had the following children:

- +23 Margaret Rebecca FORGEY (1801-)
- +24 John FORGEY (1795?-)
- +25 Rachel FORGEY (-)

Isabella and Andrew FORGEY had the following children:

- +26 Rebecca McPheeters FORGEY (1810-)

7. **John FORGEY**, son of Andrew FORGEY and Margaret REYNOLDS, was born in 1777 (approx.) in Hawkins Co. He died "UNKNOWN". At some point he married **Nancy ARMSTRONG**.

Nancy ARMSTRONG was born in 1787 in Prince Edward County, Virginia. She died after 1854 in McMinn County, Tennessee. She and John FORGEY had the following children:

- +27 Andrew FORGEY (aft1805-1834)
- +28 Ellen FORGEY (1812-1892)
- +29 Male FORGEY (aft1815-bef1842)
- +30 Nancy FORGEY (bef1820-bef1846)
- +31 John T FORGEY (1821-1901)
- +32 Sarah FORGEY (1824-)

8. **Sally FORGEY**, daughter of Andrew FORGEY and Margaret REYNOLDS, was born on 10 July 1779 in Tennessee. She died. At some point she married **Thomas COLDWELL**.

Thomas COLDWELL and Sally FORGEY had the following children:

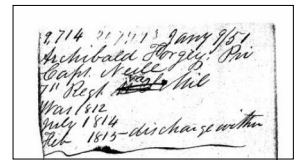
- +33 Andrew Forgey COLDWELL (1807-)
- +34 Thomas COLDWELL (-)
- +35 Benjamin (Benoni) COLDWELL (-)
- +36 James Lawrence COLDWELL (-)
- +37 Abram COLDWELL (-)
- +38 Louisiana COLDWELL (-)
- +39 Indiana COLDWELL (-)

Third Generation

9. **Archibald FORGEY**, son of Hugh FORGEY and Catherine FISHER, was born in 1790 in Tennessee. He was born in 1790 (approx.) in Tennessee, USA. He married **Eleanor ROLLER** in 1820 (approx.) in Scott, Virginia, USA. He died in 1865 (approx.) in Scott.

Eleanor ROLLER, daughter of Jacob ROLLER (1767?-1861?) and Eva ZIRKLE (1773?-1858), was born on 3 August 1795 in New Market, Shenandoah Co., Va. She was born on 3 August 1795 in New Market, Shenandoah, Virginia, USA. In 1850 she was resident in Western District, Scott, Virginia. She died in 1860 in Virginia. She and Archibald FORGEY had the following children:

- +40 Anna FORGEY (1816-1873)
- +41 Jacob R. FORGEY (1821-1896)
- +42 John A. FORGEY (1822-1862)
- +43 Catherine FORGEY (1824-)
- +44 Hugh FORGEY (1825-1860)
- +45 Nancy FORGEY (1826-)
- +46 Eve FORGEY (1828-1911)
- +47 George S. FORGEY (1829-1908)
- +48 Attalina FORGEY (1834-1904)
- +49 Eleanor FORGEY (1836?-1878)
- +50 Mary FORGEY (1836-1881)
- +51 Archibald A. FORGEY (1839-1915)

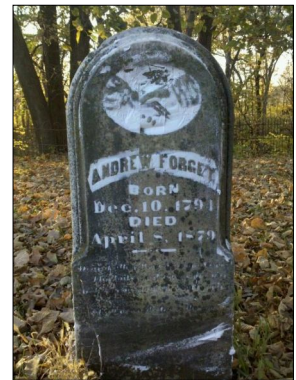


Archibald FORGEY, Archibald Forgey, War of 1812

10. **Andrew FORGEY**, son of Hugh FORGEY and Catherine FISHER, was born on 10 December 1794 in Knox County, Tennessee. He married **Anna ROLLER** on 15 October 1816 in Leesville, Lawrence Co., in. He married **Elizabeth MAXWELL** on 23 May 1850 in Henderson Co., Il. In 1870 he was resident in 1870 Census places Andrew in Illinois on June 13 and in Iowa on Sept 2. He died on 8 April 1879 in Scott County, Iowa. He was buried "UNKNOWN" in Fridays Private Cemetery, Scott County, Iowa.

Anna ROLLER, daughter of Jacob ROLLER (1767?-1861?) and Eva ZIRKLE (1773?-1858), was born on 12 February 1797 in New Market. She died on 24 March 1841 in Jackson County, Indiana. She and Andrew FORGEY had the following children:

- +52 Hugh FORGEY (1817-1882)
- +53 John FORGEY (1818-aft1880)
- +54 Eleanor FORGEY (1820-)
- +55 Amos FORGEY (1823-1905)
- +56 James FORGEY (1825-1920)
- +57 Elizabeth Ann FORGEY (1827-1901)



Andrew FORGEY

- +58 Nancy FORGEY (1830-1923)
- +59 Elias FORGEY (1832-1911)
- +60 Andrew FORGEY (1834-1842)
- +61 Jacob Roller FORGEY (1837-1909)
- +62 George Washington FORGEY (1840-1924)

Elizabeth MAXWELL was born on 6 August 1820 in Ky. She died on 6 August 1910 in Stillwater, Payne Co., Ok. She was buried in 1910 in Fairlawn Cemetery, Stillwater, Payne Co., Ok. She and Andrew FORGEY had the following children:

- +63 Adaline FORGEY (1852?-)
- +64 Clark FORGEY (1853-aft1894)
- +65 Elisha J. FORGEY (1855-1928)
- +66 Lewis FORGEY (1858?-)

11. **James A. FORGEY**, son of Hugh FORGEY and Catherine FISHER, was born in 1803 (approx.) in Hawkins County, Tennessee. He married **Rachel UNKNOWN** in 1825 (approx.) in Scott County, Virginia. He died between 1860 and 1870 in Indiana.

Rachel UNKNOWN was born in 1807 (approx.) in Virginia. She died. She and James A. FORGEY had the following children:

- +67 Ellen FORGEY (1825-)
- +68 Sarah FORGEY (1827-)
- +69 John D. FORGEY (1829-)
- +70 William M. FORGEY (1831?-)
- +71 Emily Jane FORGEY (1835?-)
- +72 Eliza C. FORGEY (1839?-)
- +73 Mary A. FORGEY (1840?-)
- +74 Margaret A. FORGEY (1844?-)
- +75 Phitney M. FORGEY (1848?-)
- +76 M. Alice FORGEY (1850?-)

12. **Mary "Polly" FORGEY**, daughter of Hugh FORGEY and Catherine FISHER, was born in 1800. At some point she married **Robert WEDDLE**.

Robert WEDDLE and Mary "Polly" FORGEY had the following children:

- +77 Joseph WEDDLE (1826-)

13. **Andrew CRAWFORD**, son of Samuel CRAWFORD and Nancy FORGEY, was born on 19 April 1790 in Knox County. He died.

14. **Samuel Reynolds CRAWFORD**, son of Samuel CRAWFORD and Nancy FORGEY, was born in 1792 (approx.) in Knox County. He died. At some point he married **Rebecca FORGEY**. At some point he married **Margaret Rebecca FORGEY**.

Margaret Rebecca FORGEY, daughter of Andrew FORGEY (1776-1830) and Hannah (-), was born on 5 May 1801 in Hawkins County. She died.

15. **Thomas CRAWFORD**, son of Samuel CRAWFORD and Nancy FORGEY, was born on 4 August 1794 in Knox County. He died. At some point he married **Mariah HARRIS**.

16. **Margaret CRAWFORD**, daughter of Samuel CRAWFORD and Nancy FORGEY, was born on 19 May 1796 in Knox County. She died. At some point she married **Joseph CRABB**.

17. **Polly CRAWFORD**, son of Samuel CRAWFORD and Nancy FORGEY, was born on 17 July 1798 in Knox County. He died. At some point he married **John Baxter EDMONDSON**.

18. **Hugh Forgey CRAWFORD**, son of Samuel CRAWFORD and Nancy FORGEY, was born on 13 November 1806 in Knox County. He died. At some point he married **Rebecca McPheeters FORGEY**.

Rebecca McPheeters FORGEY, daughter of Andrew FORGEY (1776-1830) and Isabella (-), was born on 26 December 1810 in Hawkins County. She died.



Hugh Forgey CRAWFORD, and wife Rebecca McPheeters Forgey



Spouse: Rebecca McPheeters FORGEY

- 19. **Nancy CRAWFORD**, daughter of Samuel CRAWFORD and Nancy FORGEY, was born. She died. At some point she married **William MCMUNN**.
- 20. **Eleanor S. CRAWFORD**, daughter of Samuel CRAWFORD and Nancy FORGEY, was born in March 1810 in Knox County. She died.
- 21. **Rebecca ROBERTS**, daughter of Henry ROBERTS and Margaret FORGEY, was born on 18 October 1803 in Knox County. She died.
- 22. **Andrew ROBERTS** was the son of Henry ROBERTS and Margaret FORGEY.
- 23. **Margaret Rebecca FORGEY**, daughter of Andrew FORGEY and Hannah, was born on 5 May 1801 in Hawkins County. She died. At some point she married **Samuel Reynolds CRAWFORD**.

Samuel Reynolds CRAWFORD, son of Samuel CRAWFORD (1758-1822) and Nancy FORGEY (1768-1837), was born in 1792 (approx.) in Knox County. He died.

24. **John FORGEY**, son of Andrew FORGEY and Hannah, was born in 1795 (approx.) in Hawkins County. He died. At some point he married **Mary**.

Mary was born in 1801 (approx.) in Maryland. She died after 1870. She and John FORGEY had the following children:

- +78 Abraham J. FORGEY (1827?-1875?)
- +79 William Henry FORGEY (1828-1871)
- +80 Martha J. FORGEY (1833?-)
- +81 John T. S. FORGEY (1836?-)
- +82 Mary A. FORGEY (1841?-)
- +83 J. W. FORGEY (1842?-)
- +84 Louisiana FORGEY (1844?-1920)
- +85 Alexander D FORGEY (1847?-)

25. At some point **Rachel FORGEY**, daughter of Andrew FORGEY and Hannah, married **CRAWFORD**.

26. **Rebecca McPheeters FORGEY**, daughter of Andrew FORGEY and Isabella, was born on 26 December 1810 in Hawkins County. She died. At some point she married **Hugh Forgey CRAWFORD**.

Hugh Forgey CRAWFORD, son of Samuel CRAWFORD (1758-1822) and Nancy FORGEY (1768-1837), was born on 13 November 1806 in Knox County. He died.



Rebecca McPheeters FORGEY



Spouse: Hugh Forgey CRAWFORD, and wife Rebecca McPheeters Forgey

27. **Andrew FORGEY**, son of John FORGEY and Nancy ARMSTRONG, was born between 1805 and 1810 in Tennessee. He died in 1834 in McMinn County, Tennessee.

28. **Ellen FORGEY**, daughter of John FORGEY and Nancy ARMSTRONG, was born on 16 July 1812 in Giles County?, Tennessee. She married **Jesse SHAMBLIN**. She died on 17 April 1892 in Tennessee.

29. **Male FORGEY**, son of John FORGEY and Nancy ARMSTRONG, was born between 1815 and 1820 in Tennessee. He married **Mary Ann HANKS**. He died before 1842.

Mary Ann HANKS was born in 1822 (approx.) in Tennessee. She died on 29 May 1893 in Carroll County, Arkansas. She was buried in Denver Cemetery.

30. **Nancy FORGEY**, daughter of John FORGEY and Nancy ARMSTRONG, was born before 1820 in Tennessee. She married **Joel CULPEPPER**. She died before 1846 in McMinn County.

31. **John T FORGEY**, son of John FORGEY and Nancy ARMSTRONG, was born on 18 May 1821. He married **Louisa Jane WEEKS** on 4 August 1842 in McMinn County. He died on 14 January 1901 in McMinn County.

Louisa Jane WEEKS was born on 25 December 1828. She died on 5 March 1908 in McMinn County. She and John T FORGEY had the following children:

- +86 Nancy Ellen FORGEY (1844-1924)
- +87 James FORGEY (-)
- +88 Polly Ann FORGEY (-)
- +89 Sarah M FORGEY (-)
- +90 Rose M FORGEY (-)
- +91 Elizabeth FORGEY (-)
- +92 Harriett FORGEY (-)
- +93 Margaret FORGEY (-)
- +94 John FORGEY (-)
- +95 Dave FORGEY (1863-)



John T FORGEY, John T. Forgey

32. **Sarah FORGEY**, daughter of John FORGEY and Nancy ARMSTRONG, was born on 5 December 1824 in Tennessee. She married **George Washington CULPEPPER**. She died.
33. **Andrew Forgey COLDWELL**, son of Thomas COLDWELL and Sally FORGEY, was born on 25 November 1807 in Hawkins County. He died.
34. **Thomas COLDWELL** was the son of Thomas COLDWELL and Sally FORGEY.
35. **Benjamin (Benoni) COLDWELL** was the son of Thomas COLDWELL and Sally FORGEY.
36. **James Lawrence COLDWELL** was the son of Thomas COLDWELL and Sally FORGEY.
37. **Abram COLDWELL** was the son of Thomas COLDWELL and Sally FORGEY.
38. **Louisiana COLDWELL** was the daughter of Thomas COLDWELL and Sally FORGEY.
39. **Indiana COLDWELL** was the daughter of Thomas COLDWELL and Sally FORGEY.

Fourth Generation

40. **Anna FORGEY**, daughter of Archibald FORGEY and Eleanor ROLLER, was born on 22 September 1816 in Scott County, Virginia. She was born in 1817 in Virginia. She married **John B. GARRISON** in 1840 (approx.). In 1870 she was resident in Finley, Christian, Missouri. She died on 8 July 1873.

John B. GARRISON was born in 1817 (approx.) in Va. He died.

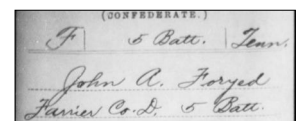
41. **Jacob R. FORGEY**, son of Archibald FORGEY and Eleanor ROLLER, was born on 25 August 1821 in Scott Co., Virginia. He married **Nancy POWERS** on 1 January 1847 in Hawkins, Tennessee, USA. He died on 28 October 1896 in Arkansas, USA.

Nancy POWERS was born on 5 December 1827 in Virginia. She died on 22 June 1901 in probably Arkansas. She and Jacob R. FORGEY had the following children:

- +96 James M. FORGEY (1846-1926)
- +97 Oliver Crockett FORGEY (1847-1929)
- +98 George FORGEY (1850-)
- +99 Jane Ruth FORGEY (1853-)
- +100 Elizabeth B. FORGEY (1855-1934)
- +101 Elender FORGEY (1857-bef1879)
- +102 Archibald FORGEY (1860?-)
- +103 Albert R FORGEY (1862?-)
- +104 John J FORGEY (1865-)
- +105 Vesta FORGEY (1869-)
- +106 Jacob FORGEY (1872-)

42. **John A. FORGEY**, son of Archibald FORGEY and Eleanor ROLLER, was born in 1822 in VA. He married **Louisa ANDERSON** on 15 January 1846 in Scott Co., Va. He died on 22 February 1862.

Louisa ANDERSON was born in 1825 in Georgia. She and John A. FORGEY had the following children:



John A. FORGEY, (strange spelling) Civil War Confederate

- +107 Andrew J. FORGEY (1846-)
- +108 John Hugh FORGEY (1849-)
- +109 Jacob FORGEY (1849-)
- +110 Hiram P. FORGEY (1850-)
- +111 Mack FORGEY (1851-)
- +112 F. Vermont FORGEY (1853-)
- +113 Sarah FORGEY (1854-)
- +114 Eleanor FORGEY (1860-1929)
- +115 Epton G. FORGEY (1859-)
- +116 Catherine FORGEY (1861-)

43. **Catherine FORGEY**, daughter of Archibald FORGEY and Eleanor ROLLER, was born in 1824 in Scott Co. She died. At some point she married **James M. POWERS**.

James M. POWERS was born between 1800 and 1830. He died.

44. **Hugh FORGEY**, son of Archibald FORGEY and Eleanor ROLLER, was born in 1825 in Scott Co. He married **Kisiah ASH** in 1855 in Barry, Missouri, USA. He died on 23 December 1860 in Benton, Arkansas, USA.

Kisiah ASH was born between 1820 and 1840. She died on 28 January 1861 in Benton. She and Hugh FORGEY had the following children:

- +117 Mary Francis FORGEY (1854-1902)
- +118 Sarah Elizabeth FORGEY (1858-1882)
- +119 Daniel A. FORGEY (1859-1933)
- +120 Margaret Rebecca Jane FORGEY (1861-1937)

45. **Nancy FORGEY**, daughter of Archibald FORGEY and Eleanor ROLLER, was born in 1826 in Scott Co. She experienced Event in 1877 in living in Christian Co., MO. She died. At some point she married **James GRAY**.

James GRAY was born between 1800 and 1830. He died.

46. **Eve FORGEY**, daughter of Archibald FORGEY and Eleanor ROLLER, was born on 11 November 1828 in Scott Co. She married **James BLOOMER** on 23 November 1853 in Scott Co. She died on 22 April 1911 in Christian Co., Mo.

James BLOOMER was born on 20 May 1832 in Scott Co. He died on 11 March 1876 in Christian Co.

47. **George S. FORGEY**, son of Archibald FORGEY and Eleanor ROLLER, was born on 10 October 1829 in Scott County. He married **Ibby ENGLAND** on 17 September 1851 in Scott Co. In 1860 he was resident in Linden, Christian, Missouri. In 1880 he was resident in Linden, Christian, Missouri, United States. In 1900 he was resident in Sparta, Christian, Missouri. He died on 2 June 1908 in Linden, Christian Co., Mo.

Ibby ENGLAND was born on 9 November 1831 in Scott Co. She died on 30 April 1910 in Christian Co., Missouri. She and George S. FORGEY had the following children:

- +121 Valentine A. FORGEY (1852-1879)
- +122 James Hugh FORGEY (1853-1919)
- +123 Andrew D. FORGEY (1855-1921)
- +124 Eleanor FORGEY (1856-1928)
- +125 Archibald FORGEY (1857-1906)
- +126 Katherine FORGEY (1858-1909)
- +127 Nancy FORGEY (1860-1910)
- +128 Sarah FORGEY (1861-)

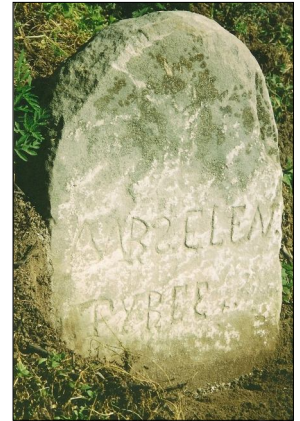
- +129 George FORGEY (1865-1954)
- +130 Thomas FORGEY (1865-1923)
- +131 Jacob FORGEY (1867-1942)
- +132 Emmaline FORGEY (1869-1952)
- +133 Albert FORGEY (1871-1943)
- +134 Mary FORGEY (1873-1920)

48. **Attalina FORGEY**, daughter of Archibald FORGEY and Eleanor ROLLER, was born in 1834 in Scott Co. She married **James ENGLAND** on 15 October 1856 in Hancock Co., Tn. She died in 1904 in Dade Co., MO.

James ENGLAND was born on 26 June 1834 in Scott Co. He died on 5 November 1891 in Dade Co.

49. **Eleanor FORGEY**, daughter of Archibald FORGEY and Eleanor ROLLER, was born in 1836 (approx.) in Scott Co. Virginia. She married **William M. TYREE** on 2 August 1859 in probably Scott Co., VA. She died on 18 October 1878 in Rockcastle, Kentucky, USA. She was buried in Francisco Cemetery, Rockcastle County, Kentucky.

William M. TYREE was born in 1839 (approx.) in Scott Co. He was born in 1840 in Virginia. In 1850 he was resident in Western District, Scott, Virginia. He married on 2 August 1879 in Rockcastle. He died in 1912 in Crawford Co., IN.



Eleanor FORGEY, Tombstone

50. **Mary FORGEY**, daughter of Archibald FORGEY and Eleanor ROLLER, was born in 1836 in Scott Co. She married **James Thomas RILEY** on 5 December 1857 in Scott Co. She married **James B. HOBBS** in 1866 (approx.). She died on 5 September 1881 in Benton.

James Thomas RILEY was born in 1831 (approx.) in Scott Co. He died.

James B. HOBBS was born on 6 May 1848. He died on 23 April 1921 in Benton.

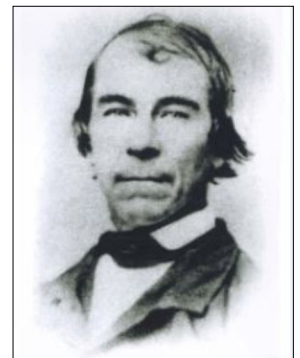
51. **Archibald A. FORGEY**, son of Archibald FORGEY and Eleanor ROLLER, was born on 30 August 1839 in Scott Co. He died on 9 June 1915 in Benton. At some point he married **Rachel UNKNOWN**.

Rachel UNKNOWN was born in March 1837 in Va. She died.

52. **Hugh FORGEY**, son of Andrew FORGEY and Anna ROLLER, was born on 28 March 1817 in Scott Co. Virginia. He married **Delilah HENDERSON** in 1839 (approx.) in In. He married **Elizabeth WRAY** on 7 February 1851 in Jackson County, Indiana. He made a will on 3 July 1882 in Jackson County. He died on 28 November 1882 in Silones Springs, Arkansas. He was buried in Freetown Cemetery, Freetown, Indiana.

Elizabeth WRAY, daughter of Anderson WRAY (1810?-1867) and Sarah CAMPBELL (1812?-1848?), was born on 20 September 1833 in Jackson County. She died on 19 April 1895 in Jackson County. She was buried in Freetown Cemetery. She and Hugh FORGEY had the following children:

- +135 William Wray FORGEY (1862-1933)
- +136 Leander FORGEY (1854-)



Hugh FORGEY

+137 Sarah Ellen FORGEY (1858-)

Delilah HENDERSON was born in 1820 (approx.) in In. She died. She and Hugh FORGEY had the following children:

+138 Eupha FORGEY (1839?-)
+139 Nancy A. FORGEY (1844?-)

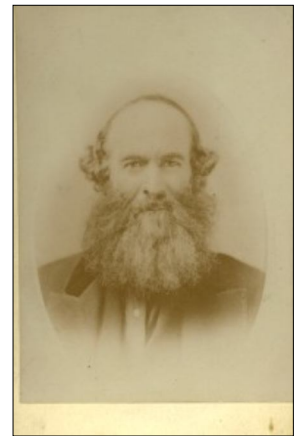


Spouse: Elizabeth WRAY

53. **John FORGEY**, son of Andrew FORGEY and Anna ROLLER, was born on 13 September 1818 in Scott Co. He married **Margaret Matilda MILLHOLLAND** on 14 June 1845 in Jackson Co., in. In 1860 he was in Wagon maker. He died after 1880 in Prob. Wa. On 3 November 1891 he possessed in Received homestead title to 158 acres in Douglas County, Washington. He died on 4 July 1892 in Douglas Co., WA.

Margaret Matilda MILLHOLLAND was born in 1825 (approx.) in NC. She died on 20 May 1898 in Douglas Co. She and John FORGEY had the following children:

+140 Mary Ann FORGEY (1845?-)
+141 William Andrew FORGEY (1847-1895)
+142 Nancy J. FORGEY (1850-)
+143 Laura FORGEY (1851-1916)
+144 Priscilla FORGEY (1854?-)
+145 Sarah J. FORGEY (1856?-)
+146 Martha FORGEY (1858?-)
+147 Elizabeth FORGEY (1862?-)



John FORGEY

54. **Eleanor FORGEY**, daughter of Andrew FORGEY and Anna ROLLER, was born on 2 April 1820 in Scott County, Virginia? She died.
55. **Amos FORGEY**, son of Andrew FORGEY and Anna ROLLER, was born on 7 January 1823 in Leesville, Lawrence County, Indiana. He married in 1843 (approx.). He married **Elizabeth LANNING** on 18 March 1849. He died in 1905 in Henderson Co., Il.

Elizabeth LANNING was born in April 1833 in In. She was born in 1834 (approx.) in Il. She died. She and Amos FORGEY had the following children:

+148 Mahala FORGEY (1850-)
+149 William FORGEY (1851-)
+150 Mary K. FORGEY (1853?-)
+151 Asa FORGEY (1855?-)
+152 Idelia FORGEY (1857?-)
+153 Nancy E. FORGEY (1859?-)
+154 Sarah E. FORGEY (1863?-)
+155 Amos G. FORGEY (1866?-)
+156 George FORGEY (1871?-)

56. **James FORGEY**, son of Andrew FORGEY and Anna ROLLER, was born on 26 July 1825 in Jackson County. He was born on 26 July 1825 in Scott Co. Virginia. He married on 19 May 1847 in Henderson Co. He married **Mary E. MILLHOLLAND** on 19 May 1847 in Henderson Co. He married **Harriet RAY** on 12 May 1863 in Linn Co., Oregon. He died on 21 February 1920 in Asotin Co., Wa. He was buried in 1920 in Peola Pioneer Cemetery, Garfield Co., WA. He died after 1920 in Asotin Co. At some point he married **Elriky (UNKNOWN)**.

Mary E. MILLHOLLAND was born in 1824 (approx.) in NC. She died in 1860 (approx.) in OR. She and James FORGEY had the following children:

- +157 Nancy FORGEY (1853?-)
- +158 Marietta FORGEY (1855?-)
- +159 Lucy FORGEY (1856?-)
- +160 Sylvester FORGEY (1857?-)
- +161 Henrietta FORGEY (1858?-)
- +162 Sarah A. FORGEY (1860-)

Harriet RAY was born in 1846 (approx.) in TN. She died. She and James FORGEY had the following children:

- +163 George W. FORGEY (1864-1890)
- +164 Laura Bell FORGEY (1871?-)

Elriky (UNKNOWN) was born in August 1839 in Ky. She died "UNKNOWN".

57. **Elizabeth Ann FORGEY**, daughter of Andrew FORGEY and Anna ROLLER, was born on 25 October 1827 in Jackson County. She married on 6 May 1847 in Scott Co., Ia. She died on 11 November 1901 in Scott Co. She was buried in 1901 in Friday Family Cemetery, Davenport, Scott Co., Ia.



Elizabeth Ann FORGEY

58. **Nancy FORGEY**, daughter of Andrew FORGEY and Anna ROLLER, was born on 15 January 1830 in Lawrence County, Indiana. She married on 22 September 1847 in Scott Co. She died on 30 July 1923 in Shoal Creek, Newton Co., Mo.



Nancy FORGEY

59. **Elias FORGEY**, son of Andrew FORGEY and Anna ROLLER, was born on 7 March 1832 in Lawrence County. In 1860 he was in Stone Mason. He married in 1865 (approx.). He married **Amanda Caestine HOLMAN** in 1865 (approx.). He died on 19 June 1911 in Asotin Co. He was buried in 1911 in Asotin Cemetery, Asotin Co., WA.

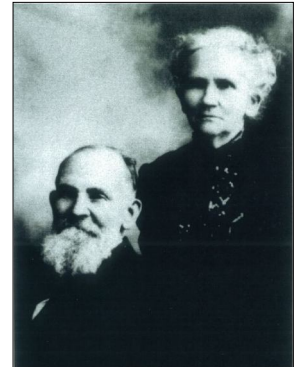
Amanda Caestine HOLMAN was born in May 1847 in MO. She died in 1928. She was buried in 1928 in Asotin Cemetery. She and Elias FORGEY had the following children:

- +165 Elias J. FORGEY (1879-1900)
- +166 Elvina FORGEY (1868-1916)

60. **Andrew FORGEY**, son of Andrew FORGEY and Anna ROLLER, was born on 9 September 1834 in Leesville, Lawrence Co., Indiana. He died on 12 October 1842 in In.
61. **Jacob Roller FORGEY**, son of Andrew FORGEY and Anna ROLLER, was born on 17 July 1837 in Lawrence County. He died on 3 April 1909 in Linn Co., or. He was buried in 1909 in Riverside Cemetery, Albany, Linn Co., or.
62. **George Washington FORGEY**, son of Andrew FORGEY and Anna ROLLER, was born on 13 September 1840 in Lawrence County. He married in 1862 (approx.). He married **Martha Ann SHERER** in 1862 (approx.). He died in April 1924 in Albany, Linn Co., or. He was buried in 1924 in Riverside Cemetery.

Martha Ann SHERER was born on 24 January 1848 in Il. She died on 5 June 1923 in Albany. She was buried in 1923 in Riverside Cemetery. She and George Washington FORGEY had the following children:

- +167 Fred J. FORGEY (1884-1902)
- +168 Grover FORGEY (1867-1941)



George Washington FORGEY

63. **Adaline FORGEY**, daughter of Andrew FORGEY and Elizabeth MAXWELL, was born in 1852 (approx.) in Il. She died "UNKNOWN".
64. **Clark FORGEY**, son of Andrew FORGEY and Elizabeth MAXWELL, was born on 25 May 1853 in Il. He was born in Il. He married **Lucy TEMPLE** in 1876 (approx.). In 1880 he was. He married **Mary M. PHELPS** on 19 June 1885 in Fairbury, Jefferson Co., NE. He married **Mary E. CAMPBELL** after 1885. He died after 1894. He died.

Lucy TEMPLE died.

Mary M. PHELPS was born in 1863 in MA. She died.

Mary E. CAMPBELL was born in 1863 (approx.) in Il. She died. She and Clark FORGEY had the following children:

- +169 Lewis Clifton FORGEY (1894-1952)

65. **Elisha J. FORGEY**, son of Andrew FORGEY and Elizabeth MAXWELL, was born on 15 October 1855 in Scott Co. He married **Sarah J. PHELPS** on 21 February 1885 in Fairbury. He died in 1928 in Steamboat Springs, Colorado. He died in 1928 in CO. He was buried in 1928 in Steamboat Springs, Ruott, Colorado.

Sarah J. PHELPS was born in November 1864 in MA. She was adopted in Listed as Mary's adopted daughter in the 1880 Census. She died in 1929 in CO. She and Elisha J. FORGEY had the following children:

- +170 Harper L. FORGEY (1887-1952)
- +171 Chester M. FORGEY (1891-)
- +172 Charles FORGEY (1898-)



Elisha J. FORGEY

66. **Lewis FORGEY**, son of Andrew FORGEY and Elizabeth MAXWELL, was born in 1858 (approx.) in Il. He died "UNKNOWN".
67. **Ellen FORGEY**, daughter of James A. FORGEY and Rachel UNKNOWN, was born on 2 August 1825 in Scott County. She married **William NEWKIRK** on 24 December 1846 in Jennings County, Indiana. She died.
68. **Sarah FORGEY**, daughter of James A. FORGEY and Rachel UNKNOWN, was born on 5 November 1827 in Scott County. She married **Achilles V. PADGETT** on 2 November 1843 in Jackson County. She died.
69. **John D. FORGEY**, son of James A. FORGEY and Rachel UNKNOWN, was born on 29 October 1829 in Scott County. He married **Margaret THOMAS** on 7 August 1850 in Jennings County. He died.

Margaret THOMAS and John D. FORGEY had the following children:

- +173 Alice FORGEY (1852-)
- +174 Morris FORGEY (1854-)
- +175 William FORGEY (1855-)
- +176 John FORGEY (1857-)
- +177 Tobe FORGEY (1858-)
- +178 Ceigle FORGEY (1862-)
- +179 Charles L. FORGEY (1869-)

70. **William M. FORGEY**, son of James A. FORGEY and Rachel UNKNOWN, was born in 1831 (approx.) in Jackson County. He died.
71. **Emily Jane FORGEY**, daughter of James A. FORGEY and Rachel UNKNOWN, was born in 1835 (approx.) in Jackson County. She married **James L. DICKERT** on 15 July 1849 in Jennings County. She died.
72. **Eliza C. FORGEY**, daughter of James A. FORGEY and Rachel UNKNOWN, was born in 1839 (approx.) in Jackson County. She married **Major PORTER** on 2 October 1856 in Bartholomew County, Indiana. She died.
73. **Mary A. FORGEY**, daughter of James A. FORGEY and Rachel UNKNOWN, was born in 1840 (approx.) in Jackson County. She died.
74. **Margaret A. FORGEY**, daughter of James A. FORGEY and Rachel UNKNOWN, was born in 1844 (approx.) in Jackson County. She died.
75. **Phitney M. FORGEY**, daughter of James A. FORGEY and Rachel UNKNOWN, was born in 1848 (approx.) in Jennings County. She died.
76. **M. Alice FORGEY**, daughter of James A. FORGEY and Rachel UNKNOWN, was born in 1850 (approx.) in Jennings County. She married **James T. REAP** on 30 October 1869 in Bartholomew County. She died.
77. **Joseph WEDDLE**, child of Robert WEDDLE and Mary "Polly" FORGEY, was born in 1826.
78. **Abraham J. FORGEY**, son of John FORGEY and Mary, was born in 1827 (approx.) in Tennessee. He married **Samantha GLOVER** on 26 October 1853 in Shelby County, Tennessee. He died in 1875 (approx.) in Shelby County.

Samantha GLOVER died in Shelby County.
79. **William Henry FORGEY**, son of John FORGEY and Mary, was born on 31 August 1828 in Tennessee. He married **Jane M. BOND** on 13 October 1852 in Shelby County. He died on 29 October 1871 in Shelby County.

80. **Martha J. FORGEY**, daughter of John FORGEY and Mary, was born in 1833 (approx.) in Tennessee. She married **W. B. JONES** on 15 May 1861 in Shelby County. She died.
81. **John T. S. FORGEY**, son of John FORGEY and Mary, was born in 1836 (approx.) in Tennessee. He experienced Military. He died.
82. **Mary A. FORGEY**, daughter of John FORGEY and Mary, was born in 1841 (approx.) in Tennessee. She died.
83. **J. W. FORGEY**, son of John FORGEY and Mary, was born in 1842 (approx.) in Tennessee. He experienced Military. He died.
84. **Louisiana FORGEY**, daughter of John FORGEY and Mary, was born in 1844 (approx.) in Tennessee. She died on 5 November 1920 in Shelby County. At some point she married **Winfield WATSON**.
85. **Alexander D FORGEY**, son of John FORGEY and Mary, was born in 1847 (approx.) in Tennessee. He died.
86. **Nancy Ellen FORGEY**, daughter of John T FORGEY and Louisa Jane WEEKS, was born on 3 June 1844 in McMinn County, Tennessee. She married **John Ray MOSS** on 29 January 1860 in McMinn County. She died on 26 February 1924.

John Ray MOSS was born in 1839 in McMinn County. He died.



Nancy Ellen FORGEY, and
Husband John Moss

87. **James FORGEY** was the son of John T FORGEY and Louisa Jane WEEKS.
88. At some point **Polly Ann FORGEY**, daughter of John T FORGEY and Louisa Jane WEEKS, married **Robert DAVIS**.
89. At some point **Sarah M FORGEY**, daughter of John T FORGEY and Louisa Jane WEEKS, married **William HARRIS**.
90. At some point **Rose M FORGEY**, daughter of John T FORGEY and Louisa Jane WEEKS, married **George CARVER**.
91. At some point **Elizabeth FORGEY**, daughter of John T FORGEY and Louisa Jane WEEKS, married **Houston THURMAN**.
92. At some point **Harriett FORGEY**, daughter of John T FORGEY and Louisa Jane WEEKS, married **Dow GENTRY**.
93. At some point **Margaret FORGEY**, daughter of John T FORGEY and Louisa Jane WEEKS, married **Thomas WALLACE**.
94. At some point **John FORGEY**, son of John T FORGEY and Louisa Jane WEEKS, married **Camsadie SIMPSON**.
95. **Dave FORGEY**, son of John T FORGEY and Louisa Jane WEEKS, was born on 22 February 1863 in McMinn County. He died. At some point he married **Martha GENTRY**.

Martha GENTRY and Dave FORGEY had the following children:

- +180 Margaret FORGEY (1893-1970)
- +181 John Melvin FORGEY (1895-1985)
- +182 Clemmie Ann FORGEY (1897-1925)
- +183 Jesse FORGEY (1901-1958)
- +184 Samuel David "Ross" FORGEY (1902-1964)
- +185 Hattie C. FORGEY (1906-1992)
- +186 Thomas "Lake" FORGEY (1908-1945)



Dave FORGEY

Fifth Generation

96. **James M. FORGEY**, son of Jacob R. FORGEY and Nancy POWERS, was born on 20 September 1846 in Scott Co., Va. He married **Nancy ROLLER** on 23 February 1871 in Benton, Arkansas, USA. He died on 27 July 1926 in Arkansas, USA.

Nancy ROLLER was born on 18 September 1844 in Gateway, Benton Co., Arkansas. She died on 9 December 1932 in Arkansas. She and James M. FORGEY had the following children:

- +187 Charles A FORGEY (1872-1954)
- +188 Theodore H FORGEY (1875-1954)
- +189 Alice J FORGEY (1878-)
- +190 George Washington FORGEY (1880-1954)
- +191 Eliga FORGEY (1883-1955)
- +192 Luella FORGEY (1887-)

97. **Oliver Crockett FORGEY**, son of Jacob R. FORGEY and Nancy POWERS, was born on 5 September 1847 in Virginia. He married **Mahala ROLLER** on 1 April 1874 in Benton. He married **Rebecca FRAZIER** on 23 September 1906. He died on 10 January 1929 in Benton.

Mahala ROLLER was born on 15 September 1845 in Benton. She died on 8 December 1904 in Gateway, Benton Co., Ark. She and Oliver Crockett FORGEY had the following children:

- +193 Cora A. FORGEY (1875-1933)
- +194 Ida M. FORGEY (1876-1941)
- +195 Robert W. FORGEY (1879-)
- +196 Edwin Garrin FORGEY (1885-1961)

Rebecca FRAZIER was born in 1847 (approx.) in Va. She died.

98. **George FORGEY**, son of Jacob R. FORGEY and Nancy POWERS, was born in 1850 in Benton. He died.
99. **Jane Ruth FORGEY**, daughter of Jacob R. FORGEY and Nancy POWERS, was born in 1853 in Arkansas. She died.
100. **Elizabeth B. FORGEY**, daughter of Jacob R. FORGEY and Nancy POWERS, was born on 23 April 1855 in Arkansas. She married **William Donald ROLLER** on 15 February 1872 in Benton. She died on 17 June 1934 in Benton.

William Donald ROLLER was born on 6 August 1847 in Benton. He died on 13 January 1929 in Seligman, Missouri.

101. **Elender FORGEY**, daughter of Jacob R. FORGEY and Nancy POWERS, was born on 9 January 1857 in Arkansas. She married **John ROBINETTE** on 19 March 1876 in Barry, Missouri, USA. She died before 1879 in Benton.

John ROBINETTE was born in 1857 (approx.). He died.

102. **Archibald FORGEY**, son of Jacob R. FORGEY and Nancy POWERS, was born in 1860 (approx.) in Arkansas. He married **Laura A HEMENWAY** on 19 October 1887 in Benton. He died.

Laura A HEMENWAY was born between 1850 and 1865. She died.

103. **Albert R FORGEY**, son of Jacob R. FORGEY and Nancy POWERS, was born in 1862 (approx.) in Arkansas. He died. At some point he married **HETTIE**.

HETTIE was born between 1860 and 1870. She died. She and Albert R FORGEY had the following children:

+197 Katie FORGEY (1890-)

104. **John J FORGEY**, son of Jacob R. FORGEY and Nancy POWERS, was born in August 1865 in Arkansas. He married **Alice MCKIMSEY** on 19 October 1887 in Benton. He died. At some point he married **Dora**.

Alice MCKIMSEY was born between 1860 and 1870. She died. She and John J FORGEY had the following children:

+198 Frank FORGEY (1888-)

Dora was born between 1860 and 1870. She died.

105. **Vesta FORGEY**, daughter of Jacob R. FORGEY and Nancy POWERS, was born in September 1869 in Arkansas. She married **Hiram C. ROLLER** on 28 November 1888 in Benton. She died.

Hiram C. ROLLER was born on 27 December 1862 in Benton. He died in October 1945 in Rocky Ford, Colorado.

106. **Jacob FORGEY**, son of Jacob R. FORGEY and Nancy POWERS, was born on 3 May 1872. He died. At some point he married **Olivia REED**.

Olivia REED was born on 18 August 1871. She died on 3 January 1943. She and Jacob FORGEY had the following children:

+199 Flossie FORGEY (1890-)

+200 Ova FORGEY (1895-)

107. **Andrew J. FORGEY**, son of John A. FORGEY and Louisa ANDERSON, was born in 1846 in Scott Co. He experienced Event in 1880 in KY to Christian Co., MO. He died. At some point he married **Gilla UNKNOWN**.

Gilla UNKNOWN was born between 1850 and 1860 in Va. She died. She and Andrew J. FORGEY had the following children:

+201 Vermont FORGEY (1872?-)

+202 John FORGEY (1875?-)

+203 Sallie FORGEY (1878?-)

+204 Mary FORGEY (1880-)

108. **John Hugh FORGEY**, son of John A. FORGEY and Louisa ANDERSON, was born in 1849 in Scott Co. He married **Harriet Elizabeth MCMINN** on 13 September 1881 in Christian Co., Mo. He died.

Harriet Elizabeth MCMINN and John Hugh FORGEY had the following children:

+205 Mary Ann FORGEY (1884-)

+206 Lorena FORGEY (-)



John Hugh FORGEY, and Wife
Harriet Elizabeth McMinn

109. **Jacob FORGEY**, son of John A. FORGEY and Louisa ANDERSON, was born in 1849 in Scott Co. He died. At some point he married **Amanda UNKNOWN**.

Amanda UNKNOWN was born between 1845 and 1865. She died. She and Jacob FORGEY had the following children:

+207 Riley FORGEY (1881-)

+208 Marion R FORGEY (1886-)

+209 Ora G. FORGEY (1894-)

110. **Hiram P. FORGEY**, son of John A. FORGEY and Louisa ANDERSON, was born in 1850 in Scott Co. He died.
111. **Mack FORGEY**, son of John A. FORGEY and Louisa ANDERSON, was born in 1851 in Scott Co. He died.
112. **F. Vermont FORGEY**, son of John A. FORGEY and Louisa ANDERSON, was born on 5 December 1853 in Scott Co. He died.
113. **Sarah FORGEY**, daughter of John A. FORGEY and Louisa ANDERSON, was born in 1854 in Scott Co. She died.
114. **Eleanor FORGEY**, daughter of John A. FORGEY and Louisa ANDERSON, was born on 2 May 1860 in Scott Co. She died on 10 January 1929 in Green Co., Missouri.
115. **Epson G. FORGEY**, son of John A. FORGEY and Louisa ANDERSON, was born on 19 August 1859 in Scott Co. He married in October 1883 in Christian Co. He died.

Epson G. FORGEY had the following children:

- +210 Lum Winfield FORGEY (bef1883-)
- +211 Willie M FORGEY (1886-)
- +212 Ethel E FORGEY (1891-)
- +213 Georgia M FORGEY (1898-)
- +214 Eddie E FORGEY (1899-1979)

116. **Catherine FORGEY**, daughter of John A. FORGEY and Louisa ANDERSON, was born on 12 May 1861 in Scott Co. She died.
117. **Mary Francis FORGEY**, daughter of Hugh FORGEY and Kisiah ASH, was born in 1854 in Benton. She married **George MCGRAW** on 6 January 1879 in Barry. She died in 1902 in Barry.

George MCGRAW was born between 1840 and 1860. He died. He and Mary Francis FORGEY had the following children:

- +215 Leona MCGRAW (1879?-)

118. **Sarah Elizabeth FORGEY**, daughter of Hugh FORGEY and Kisiah ASH, was born on 8 July 1858 in Benton. She married **Eff MORGAN** on 27 October 1878 in Barry. She died on 20 May 1882.

Eff MORGAN was born between 1840 and 1860. He died.

119. **Daniel A. FORGEY**, son of Hugh FORGEY and Kisiah ASH, was born in 1859 in Benton. He married **Rebecca ROLLER** on 13 June 1880 in Barry. He died of California on 2 June 1933.

Rebecca ROLLER was born on 30 January 1856 in Gateway. She died of California on 30 June 1932. She and Daniel A. FORGEY had the following children:

- +216 Lesley FORGEY (1881-)
- +217 Charlie FORGEY (1884-)
- +218 Viola FORGEY (1889-)

120. **Margaret Rebecca Jane FORGEY**, daughter of Hugh FORGEY and Kisiah ASH, was born on 8 January 1861 in Benton. She married **John Riley HOOKER** on 21 October 1880 in Barry. She died in 1937.

John Riley HOOKER was born between 1840 and 1860. He died.

121. **Valentine A. FORGEY**, son of George S. FORGEY and Ibbey ENGLAND, was born in 1852 in Arkansas. He married **Eliza CHRISMAN** on 8 December 1872. He died in October 1879 in Christian Co.

Eliza CHRISMAN was born between 1850 and 1860. She died. She and Valentine A. FORGEY had the following children:

- +219 Frederick FORGEY (1872-)
- +220 Laura FORGEY (1874-)
- +221 Andrew FORGEY (1876-)
- +222 Viola FORGEY (1878-)

122. **James Hugh FORGEY**, son of George S. FORGEY and Ibbey ENGLAND, was born in December 1853 in Arkansas. He married **Marie DEVROE** in 1884. He experienced Event in 1900 in Census - with parents & daughters in Christian Co., MO. He died in 1919 in Kansas.

Marie DEVROE was born between 1850 and 1870. She died. She and James Hugh FORGEY had the following children:

- +223 Ibbey FORGEY (1885-)
- +224 Ethel FORGEY (1888-)

123. **Andrew D. FORGEY**, son of George S. FORGEY and Ibbey ENGLAND, was born on 29 April 1855 in Arkansas. He married **Anna Vergie BRAY** on 4 December 1883. He died on 7 December 1921 in Christian Co.

Anna Vergie BRAY was born on 4 December 1863. She died on 30 March 1945. She and Andrew D. FORGEY had the following children:

- +225 Joseph Herbert FORGEY (1884-1927)
- +226 Cora Keziah FORGEY (1886-1921)
- +227 Edna Mae FORGEY (1888-)
- +228 Lou Ethel FORGEY (1892-1966)
- +229 William Carson FORGEY (1895-)
- +230 Homer Dain FORGEY (1897-)
- +231 Arthur Dayton FORGEY (1907-1961)

124. **Eleanor FORGEY**, daughter of George S. FORGEY and Ibbey ENGLAND, was born on 27 July 1856 in Arkansas. She married **Thomas M. GRIDER** on 15 September 1878. She died on 7 January 1928 in Green Co.

Thomas M. GRIDER was born between 1840 and 1860. He died.

125. **Archibald FORGEY**, son of George S. FORGEY and Ibbey ENGLAND, was born in 1857 in Christian Co. He died in 1906 in Jasper Co., Mo. At some point he married **BECKY**.

BECKY was born between 1855 and 1870. She died.

126. **Katherine FORGEY**, daughter of George S. FORGEY and Ibbey ENGLAND, was born in 1858 in Christian County, Missouri. She married **William ROLLER** on 19 September 1880 in Christian County. She died on 10 August 1909 in Paw Paw, Oklahoma. At some point she married **Unknown LEE**.

William ROLLER was born in 1856 in Christian County. He died before 1898.

Unknown LEE was born between 1840 and 1860. He died.

127. **Nancy FORGEY**, daughter of George S. FORGEY and Ibbey ENGLAND, was born on 9 March 1860 in Christian Co. She married **Asariah Sheldon COUCH** on 5 September 1885 in Christian Co. She died on 21 March 1910 in Vermillion Co., IL.

Asariah Sheldon COUCH was born on 9 October 1856 in Johnson Co., AR. He died on 4 May 1927 in Vermillion Co. He and Nancy FORGEY had the following children:

- +232 Mary Isabel COUCH (aft1885-)
- +233 John Ralston COUCH (aft1885-)

128. **Sarah FORGEY**, daughter of George S. FORGEY and Ibbey ENGLAND, was born in 1861 in Christian Co. She married **Thomas J LENOX** in August 1885. She died in Ok.

Thomas J LENOX was born between 1840 and 1860. He died.

129. **George FORGEY**, son of George S. FORGEY and Ibbey ENGLAND, was born on 14 February 1865 in Christian Co. He married **Mary T. CHAUDOIN** on 24 November 1895. He died on 15 May 1954 in Christian Co.

Mary T. CHAUDOIN was born in 1865 in Ky. She died. She and George FORGEY had the following children:

- +234 Permelia E. FORGEY (1892-)
- +235 Jewell E. FORGEY (1895-)
- +236 Eugene FORGEY (1896-)
- +237 Farrel B. FORGEY (1898-)

130. **Thomas FORGEY**, son of George S. FORGEY and Ibbey ENGLAND, was born on 14 February 1865 in Christian Co. He died on 11 December 1923 in Vernon Co., Mo.

131. **Jacob FORGEY**, son of George S. FORGEY and Ibbey ENGLAND, was born on 30 April 1867 in Christian Co. He married **Eliza MERRITT** on 28 September 1890 in Christian Co. He died on 16 March 1942 in Christian Co. At some point he married **Wilburn Liza RUSSELL**.

Eliza MERRITT was born between 1860 and 1875. She died. She and Jacob FORGEY had the following children:

- +238 Roy FORGEY (1892-)
- +239 Clyde FORGEY (1896-)
- +240 Archibald FORGEY (1898-)

Wilburn Liza RUSSELL was born between 1865 and 1880. She died.

132. **Emmaline FORGEY**, daughter of George S. FORGEY and Ibbey ENGLAND, was born on 14 June 1869 in Christian Co. She married **Joe B. SMITH** on 10 October 1888. She died on 25 May 1952 in Webster Co., Mo.

Joe B. SMITH was born between 1850 and 1870. He died.

133. **Albert FORGEY**, son of George S. FORGEY and Ibbey ENGLAND, was born on 12 October 1871 in Christian Co. He married **Lorena BODENHAMER** on 1 August 1894. He died on 8 May 1943 in Green Co., Mo.

Lorena BODENHAMER was born between 1870 and 1880. She died. She and Albert FORGEY had the following children:

- +241 Gertrude FORGEY (1896-)
- +242 Albertha FORGEY (1896-)
- +243 Othella FORGEY (1899-)

134. **Mary FORGEY**, daughter of George S. FORGEY and Ibbey ENGLAND, was born on 22 August 1873 in Christian Co. She married **John Wesley ROLLER** on 18 August 1892 in rockcastle, kentucky. She died on 26 January 1920 in Christian Co.

John Wesley ROLLER was born in May 1865 in Missouri. He died in 1933 in Christian County.

135. **William Wray FORGEY**, son of Hugh FORGEY and Elizabeth WRAY, was born on 18 May 1862 in Jackson County, Indiana. He married **Isis Minerva BROWNING** on 22 June 1890 in Jackson County. He married **Alice TAYLOR (WINKLER)** on 26 June 1916 in Jackson County. He died on 20 December 1933 in Jackson County. He was buried in Freetown Cemetery, Freetown, Indiana.



William Wray FORGEY

Isis Minerva BROWNING, daughter of Richard Washington BROWNING (1822-1901) and Mary Ann CALLAHAN (1830-1919), was born on 27 November 1869 in Jackson County. She died on 7 February 1908 in Jackson County. She was buried in Freetown Cemetery. She and William Wray FORGEY had the following children:

- +244 Charles Lynn FORGEY (1898-1976)
- +245 Inez FORGEY (1891-)
- +246 Cecil Clair FORGEY (1893-)
- +247 Edna Rose FORGEY (1896-)
- +248 Claude Applewhite FORGEY (1903-)
- +249 Mona Marie FORGEY (1905-)



Spouse: Isis Minerva BROWNING

Alice TAYLOR (WINKLER) was born on 29 April 1873. She died on 20 January 1937.

136. **Leander FORGEY**, son of Hugh FORGEY and Elizabeth WRAY, was born in December 1854 in In. He was born on 25 December 1854 in Jackson County. He married in 1881 (approx.). He married **Agnes BRADEN** in 1881 (approx.). He died.

Agnes BRADEN was born in November 1862 in OH. She died. She and Leander FORGEY had the following children:

- +250 William R. FORGEY (1881-)
- +251 Clyde W. FORGEY (1883-)
- +252 Cline W. FORGEY (1885-)
- +253 John C. FORGEY (1890-)
- +254 Ruth H. FORGEY (1893-)
- +255 James E. FORGEY (1895-)
- +256 Flora E. FORGEY (1897-)
- +257 Gladys May FORGEY (1900-)
- +258 Carrie W. FORGEY (1903?-)
- +259 Vinnie FORGEY (1905?-)

137. **Sarah Ellen FORGEY**, daughter of Hugh FORGEY and Elizabeth WRAY, was born on 7 October 1858 in Jackson County. She died.

138. **Eupha FORGEY**, daughter of Hugh FORGEY and Delilah HENDERSON, was born in 1839 (approx.) in In. She died.

139. **Nancy A. FORGEY**, daughter of Hugh FORGEY and Delilah HENDERSON, was born in 1844 (approx.) in In. She died.

140. **Mary Ann FORGEY**, daughter of John FORGEY and Margaret Matilda MILLHOLLAND, was born in 1845 (approx.) in Henderson County, Illinois. She died.
141. **William Andrew FORGEY**, son of John FORGEY and Margaret Matilda MILLHOLLAND, was born on 1 January 1847 in Henderson County. He died on 4 February 1895 in Fresno Co., CA.
142. **Nancy J. FORGEY**, daughter of John FORGEY and Margaret Matilda MILLHOLLAND, was born in March 1850 in Henderson County. She died.
143. **Laura FORGEY**, daughter of John FORGEY and Margaret Matilda MILLHOLLAND, was born on 26 September 1851 in Henderson County. She married on 20 June 1869 in Linn Co., or. She died on 17 October 1916 in Benton Co., OR. She was buried in 1916 in IOOF Cemetery, Corvallis, Benton Co., OR.
144. **Priscilla FORGEY**, daughter of John FORGEY and Margaret Matilda MILLHOLLAND, was born in 1854 (approx.) in Oregon. She died.
145. **Sarah J. FORGEY**, daughter of John FORGEY and Margaret Matilda MILLHOLLAND, was born in 1856 (approx.) in OR. She died.
146. **Martha FORGEY**, daughter of John FORGEY and Margaret Matilda MILLHOLLAND, was born in 1858 (approx.) in OR. She died.
147. **Elizabeth FORGEY**, daughter of John FORGEY and Margaret Matilda MILLHOLLAND, was born in 1862 (approx.) in Linn Co., Oregon. She died.
148. **Mahala FORGEY**, daughter of Amos FORGEY and Elizabeth LANNING, was born in June 1850 in Henderson County. She married on 1 February 1872 in Henderson Co., IL. She died.
149. **William FORGEY**, son of Amos FORGEY and Elizabeth LANNING, was born in May 1851 in Henderson County. He married on 24 December 1874 in Henderson Co. He died in WA.
150. **Mary K. FORGEY**, daughter of Amos FORGEY and Elizabeth LANNING, was born in 1853 (approx.) in Henderson County. She died.
151. **Asa FORGEY**, son of Amos FORGEY and Elizabeth LANNING, was born in 1855 (approx.) in Henderson County. He died.
152. **Idelia FORGEY**, daughter of Amos FORGEY and Elizabeth LANNING, was born in 1857 (approx.) in Henderson County. She married on 3 October 1879 in Henderson Co. She died.
153. **Nancy E. FORGEY**, daughter of Amos FORGEY and Elizabeth LANNING, was born in 1859 (approx.) in Henderson County. She married on 20 January 1876 in Henderson Co., Illinois. She died.
154. **Sarah E. FORGEY**, daughter of Amos FORGEY and Elizabeth LANNING, was born in 1863 (approx.) in Henderson County. She died.
155. **Amos G. FORGEY**, son of Amos FORGEY and Elizabeth LANNING, was born in 1866 (approx.) in Henderson County. He married on 23 December 1885 in Henderson Co. He died.
156. **George FORGEY**, son of Amos FORGEY and Elizabeth LANNING, was born in 1871 (approx.) in Henderson County. He died.
157. **Nancy FORGEY**, daughter of James FORGEY and Mary E. MILLHOLLAND, was born in 1853 (approx.) in OR. She

died.

158. **Marietta FORGEY**, daughter of James FORGEY and Mary E. MILLHOLLAND, was born in 1855 (approx.) in OR. She died.
159. **Lucy FORGEY**, daughter of James FORGEY and Mary E. MILLHOLLAND, was born in 1856 (approx.) in OR. She died.
160. **Sylvester FORGEY**, son of James FORGEY and Mary E. MILLHOLLAND, was born in 1857 (approx.) in OR. He died.
161. **Henrietta FORGEY**, daughter of James FORGEY and Mary E. MILLHOLLAND, was born in 1858 (approx.) in OR. She died.
162. **Sarah A. FORGEY**, daughter of James FORGEY and Mary E. MILLHOLLAND, was born in November 1860 in OR. She died.
163. **George W. FORGEY**, son of James FORGEY and Harriet RAY, was born on 29 May 1864 in OR. He died on 27 January 1890 in WA. He was buried in 1890 in Theon Cemetery, Asotin Co., WA.
164. **Laura Bell FORGEY**, daughter of James FORGEY and Harriet RAY, was born in 1871 (approx.) in OR. She died.
165. **Elias J. FORGEY**, son of Elias FORGEY and Amanda Calestine HOLMAN, was born on 22 January 1879. He died on 8 September 1900.
166. **Elvina FORGEY**, daughter of Elias FORGEY and Amanda Calestine HOLMAN, was born on 31 January 1868 in Linn Co. She married **Eli BOLICK** in 1886. She died on 7 July 1916 in Asotin Co., Wa.

Eli BOLICK was born on 18 November 1854 in SC. He died on 29 June 1950 in Asotin Co.
167. **Fred J. FORGEY**, son of George Washington FORGEY and Martha Ann SHERER, was born on 7 May 1884 in WA. He died on 1 March 1902. He was buried in 1902 in Riverside Cemetery, Albany, Linn Co., or.
168. **Grover FORGEY**, son of George Washington FORGEY and Martha Ann SHERER, was born in August 1867 in OR. He married in 1889 (approx.). He died in 1941. He was buried in 1941 in Riverside Cemetery.
169. **Lewis Clifton FORGEY**, son of Clark FORGEY and Mary E. CAMPBELL, was born in 1894. He died on 11 April 1952 in Seattle, King Co., WA.
170. **Harper L. FORGEY**, son of Elisha J. FORGEY and Sarah J. PHELPS, was born on 22 November 1887 in CO. He died on 28 January 1952.
171. **Chester M. FORGEY**, son of Elisha J. FORGEY and Sarah J. PHELPS, was born in July 1891 in CO. He died "UNKNOWN".
172. **Charles FORGEY**, son of Elisha J. FORGEY and Sarah J. PHELPS, was born in January 1898 in CO. He died "UNKNOWN".
173. **Alice FORGEY**, daughter of John D. FORGEY and Margaret THOMAS, was born on 23 February 1852 in Vernon, Jennings County, Indiana. She married **William Thomas HARDY** on 2 November 1870 in Indiana. She died.
174. **Morris FORGEY**, son of John D. FORGEY and Margaret THOMAS, was born on 9 January 1854 in Vernon. He died.
175. **William FORGEY**, son of John D. FORGEY and Margaret THOMAS, was born on 15 September 1855 in Vernon. He died.

176. **John FORGEY**, son of John D. FORGEY and Margaret THOMAS, was born on 17 October 1857 in Franklin, Johnson County, Indiana. He died.
177. **Tobe FORGEY**, son of John D. FORGEY and Margaret THOMAS, was born on 17 November 1858 in Indiana. He died.
178. **Ceigle FORGEY**, son of John D. FORGEY and Margaret THOMAS, was born on 5 May 1862 in Indiana. He died.
179. **Charles L. FORGEY**, son of John D. FORGEY and Margaret THOMAS, was born on 15 October 1869 in Martinsville, Morgan County, Indiana. He died. At some point he married **Alice WHITESIDES**.
180. **Margaret FORGEY**, daughter of Dave FORGEY and Martha GENTRY, was born in 1893 in Tennessee. She died on 24 April 1970 in Hamilton County, Tennessee.
181. **John Melvin FORGEY**, son of Dave FORGEY and Martha GENTRY, was born on 27 August 1895 in Tennessee. He died on 22 October 1985 in Catoosa County, Georgia.
182. **Clemmie Ann FORGEY**, daughter of Dave FORGEY and Martha GENTRY, was born on 27 May 1897 in Hamilton County. She died on 15 April 1925 in Hamilton County.
183. **Jesse FORGEY**, child of Dave FORGEY and Martha GENTRY, was born in 1901 in Bradley County, Tennessee. He/she died on 15 March 1958.
184. **Samuel David "Ross" FORGEY**, son of Dave FORGEY and Martha GENTRY, was born on 1 September 1902 in Tennessee. He died on 10 January 1964 in Hamilton County.
185. **Hattie C. FORGEY**, daughter of Dave FORGEY and Martha GENTRY, was born on 16 April 1906 in Hamilton County. She died on 8 May 1992 in Catoosa County.
186. **Thomas "Lake" FORGEY**, son of Dave FORGEY and Martha GENTRY, was born on 18 March 1908 in Tennessee. He died on 7 December 1945.

Sixth Generation

187. **Charles A FORGEY**, son of James M. FORGEY and Nancy ROLLER, was born on 3 March 1872 in Benton, Arkansas, USA. He married **Frances SCHELL** on 19 January 1896. He died on 15 December 1954.

Frances SCHELL was born between 1870 and 1880. She died.
188. **Theodore H FORGEY**, son of James M. FORGEY and Nancy ROLLER, was born on 15 December 1875 in Benton. He died on 11 May 1954 in Benton. At some point he married **Jane MURRAY**.

Jane MURRAY was born between 1870 and 1890. She died.
189. **Alice J FORGEY**, daughter of James M. FORGEY and Nancy ROLLER, was born on 19 June 1878 in Benton. She married **Thomas Henry BARNES** on 15 October 1899. She died.

Thomas Henry BARNES was born between 1860 and 1880. He died.
190. **George Washington FORGEY**, son of James M. FORGEY and Nancy ROLLER, was born on 9 April 1880 in Benton. He married **Mae L RELETHFORD** on 15 December 1912. He died on 11 May 1954 in Benton.

Mae L RELETHFORD was born on 27 February 1887 in Benton. She died on 1 July 1966 in Benton.

191. **Eliga FORGEY**, son of James M. FORGEY and Nancy ROLLER, was born on 7 November 1883 in Benton. He married **Winnie BOWMAN** on 13 March 1920. He died on 11 January 1955.

Winnie BOWMAN was born between 1880 and 1898. She died.

192. **Luella FORGEY**, daughter of James M. FORGEY and Nancy ROLLER, was born on 17 January 1887 in Benton. She died. At some point she married **Will GRAHAM**.

Will GRAHAM was born between 1870 and 1890. He died.

193. **Cora A. FORGEY**, daughter of Oliver Crockett FORGEY and Mahala ROLLER, was born in March 1875 in Barry, Missouri, USA. She died in 1933 in Gateway, Arkansas.

194. **Ida M. FORGEY**, daughter of Oliver Crockett FORGEY and Mahala ROLLER, was born in August 1876 in Barry. She married **Amos R. OSBORNE** on 14 January 1941. She died in 1941 in Gateway.

Amos R. OSBORNE was born between 1860 and 1880. He died.

195. **Robert W. FORGEY**, son of Oliver Crockett FORGEY and Mahala ROLLER, was born in September 1879. He died.

196. **Edwin Garrin FORGEY**, son of Oliver Crockett FORGEY and Mahala ROLLER, was born on 15 October 1885 in Barry. He died on 18 May 1961 in Rogers, Arkansas. At some point he married **Maud BALDWIN**.

Maud BALDWIN was born on 18 August 1891 in Van Buren, Arkansas. She died on 29 February 1968 in Saline County, Missouri.

197. **Katie FORGEY**, daughter of Albert R FORGEY and HETTIE, was born in 1890 in Arkansas, USA. She died.

198. **Frank FORGEY**, son of John J FORGEY and Alice MCKIMSEY, was born in July 1888 in Indian Territory. He died.

199. **Flossie FORGEY**, daughter of Jacob FORGEY and Olivia REED, was born on 26 November 1890. She died.

200. **Ova FORGEY**, child of Jacob FORGEY and Olivia REED, was born on 22 September 1895. He/she died.

201. **Vermont FORGEY**, son of Andrew J. FORGEY and Gilla UNKNOWN, was born in 1872 (approx.) in Ky. He died.

202. **John FORGEY**, son of Andrew J. FORGEY and Gilla UNKNOWN, was born in 1875 (approx.) in Ky. He died.

203. **Sallie FORGEY**, daughter of Andrew J. FORGEY and Gilla UNKNOWN, was born in 1878 (approx.) in Ky. She died.

204. **Mary FORGEY**, daughter of Andrew J. FORGEY and Gilla UNKNOWN, was born in 1880 in Ky. She died.

205. **Mary Ann FORGEY**, daughter of John Hugh FORGEY and Harriet Elizabeth MCMINN, was born in 1884 in Missouri. She married **John Gilbert PACE** on 7 December 1903 in Christian Co., Mo.



Mary Ann FORGEY, and
Husband John Gilbert Pace

206. **Lorena FORGEY** was the child of John Hugh FORGEY and Harriet Elizabeth MCMINN.

207. **Riley FORGEY**, son of Jacob FORGEY and Amanda UNKNOWN, was born in October 1881 in rockcastle, kentucky. He died.
208. **Marion R FORGEY**, son of Jacob FORGEY and Amanda UNKNOWN, was born in May 1886 in rockcastle. He died.
209. **Ora G. FORGEY**, daughter of Jacob FORGEY and Amanda UNKNOWN, was born in October 1894 in rockcastle. She died.
210. **Lum Winfield FORGEY**, son of Epsom G. FORGEY, was born before 1883. He died.
211. **Willie M FORGEY**, son of Epsom G. FORGEY, was born in July 1886 in rockcastle. He died.
212. **Ethel E FORGEY**, daughter of Epsom G. FORGEY, was born in October 1891 in rockcastle. She died.
213. **Georgia M FORGEY**, daughter of Epsom G. FORGEY, was born in October 1898 in rockcastle. She died.
214. **Eddie E FORGEY**, son of Epsom G. FORGEY, was born on 15 September 1899 in rockcastle. He died in April 1979.
215. **Leona MCGRAW**, daughter of George MCGRAW and Mary Francis FORGEY, was born in 1879 (approx.). She died.
216. **Lesley FORGEY**, son of Daniel A. FORGEY and Rebecca ROLLER, was born in March 1881 in Arkansas. He died.
217. **Charlie FORGEY**, son of Daniel A. FORGEY and Rebecca ROLLER, was born in August 1884 in rockcastle. He died.
218. **Viola FORGEY**, daughter of Daniel A. FORGEY and Rebecca ROLLER, was born in 1889 in rockcastle. She died.
219. **Frederick FORGEY**, son of Valentine A. FORGEY and Eliza CHRISMAN, was born in 1872. He died.
220. **Laura FORGEY**, daughter of Valentine A. FORGEY and Eliza CHRISMAN, was born in 1874. She died.
221. **Andrew FORGEY**, son of Valentine A. FORGEY and Eliza CHRISMAN, was born in 1876. He died.
222. **Viola FORGEY**, daughter of Valentine A. FORGEY and Eliza CHRISMAN, was born in 1878. She died.
223. **Ibby FORGEY**, daughter of James Hugh FORGEY and Marie DEVROE, was born in September 1885 in KS. She died.
224. **Ethel FORGEY**, daughter of James Hugh FORGEY and Marie DEVROE, was born in May 1888 in KS. She died.
225. **Joseph Herbert FORGEY**, son of Andrew D. FORGEY and Anna Vergie BRAY, was born on 25 September 1884. He died on 11 September 1927 in Christian Co. At some point he married **Nora MOULDER**.

Nora MOULDER was born between 1880 and 1898. She died.
226. **Cora Keziah FORGEY**, daughter of Andrew D. FORGEY and Anna Vergie BRAY, was born on 21 September 1886. She died on 24 January 1921 in Christian Co. At some point she married **Nat GIBSON**.

Nat GIBSON was born between 1880 and 1890. He died.
227. **Edna Mae FORGEY**, daughter of Andrew D. FORGEY and Anna Vergie BRAY, was born on 27 November 1888 in Christian Co. She died. At some point she married **Allen STONE**.

Allen STONE was born between 1880 and 1890. He died.

228. **Lou Ethel FORGEY**, daughter of Andrew D. FORGEY and Anna Vergie BRAY, was born on 6 July 1892. She died on 23 August 1966 in Greene Co., MO. At some point she married **Clyde HANKS**.

Clyde HANKS was born between 1880 and 1895. He died.

229. **William Carson FORGEY**, son of Andrew D. FORGEY and Anna Vergie BRAY, was born on 2 April 1895 in Christian Co. He died. At some point he married **Agnes POTTER**.

Agnes POTTER was born between 1890 and 1898. She died.

230. **Homer Dain FORGEY**, son of Andrew D. FORGEY and Anna Vergie BRAY, was born on 20 January 1897 in Christian Co. He died in Alexandria, Virginia, USA. At some point he married **Delilah MCCOY**.

Delilah MCCOY was born between 1890 and 1910. She died.

231. **Arthur Dayton FORGEY**, son of Andrew D. FORGEY and Anna Vergie BRAY, was born on 31 July 1907. He died on 7 May 1961 in Christian Co.

232. **Mary Isabel COUCH**, daughter of Asariah Sheldon COUCH and Nancy FORGEY, was born between 1885 and 1898. She died.

233. **John Ralston COUCH**, son of Asariah Sheldon COUCH and Nancy FORGEY, was born between 1885 and 1898. He died.

234. **Permelia E. FORGEY**, daughter of George FORGEY and Mary T. CHAUDOIN, was born in 1892. She died.

235. **Jewell E. FORGEY**, son of George FORGEY and Mary T. CHAUDOIN, was born in September 1895. He died.

236. **Eugene FORGEY**, son of George FORGEY and Mary T. CHAUDOIN, was born in October 1896. He died.

237. **Farrel B. FORGEY**, son of George FORGEY and Mary T. CHAUDOIN, was born in March 1898. He died.

238. **Roy FORGEY**, son of Jacob FORGEY and Eliza MERRITT, was born in February 1892. He died.

239. **Clyde FORGEY**, son of Jacob FORGEY and Eliza MERRITT, was born in July 1896. He married **Nora HARP** on 28 September 1917 in Christian Co. He died.

Nora HARP was born between 1890 and 1898. She died.

240. **Archibald FORGEY**, son of Jacob FORGEY and Eliza MERRITT, was born in October 1898. He died.

241. **Gertrude FORGEY**, daughter of Albert FORGEY and Lorena BODENHAMER, was born in January 1896. She died.

242. **Albertha FORGEY**, daughter of Albert FORGEY and Lorena BODENHAMER, was born in December 1896. She died.

243. **Othella FORGEY**, daughter of Albert FORGEY and Lorena BODENHAMER, was born in July 1899. She died.

244. **Charles Lynn FORGEY**, son of William Wray FORGEY and Isis Minerva BROWNING, was born on 17 December 1898 in Brownstown, Jackson, Indiana. He married **Graciela DEL CASTILLO** on 10 January 1919 in Managua, Nicaragua. He died on 28 September 1976 in La Puente, Los Angeles, California.

Graciela DEL CASTILLO, daughter of Nicasio DEL CASTILLO (-) and Elena GARICA (-), was born on 10 September 1893 in Granada, Nicaragua. She died.



Charles Lynn FORGEY

245. **Inez FORGEY**, daughter of William Wray FORGEY and Isis Minerva BROWNING, was born on 28 March 1891 in Jackson County, Indiana. She died.



Inez FORGEY

246. **Cecil Clair FORGEY**, son of William Wray FORGEY and Isis Minerva BROWNING, was born on 14 August 1893 in Kurtz, Jackson County, Indiana. He died.



Cecil Clair FORGEY

247. **Edna Rose FORGEY**, daughter of William Wray FORGEY and Isis Minerva BROWNING, was born on 9 October 1896 in Brownstown, Jackson County, Indiana. She died.

248. **Claude Applewhite FORGEY**, son of William Wray FORGEY and Isis Minerva BROWNING, was born on 4 February 1903 in Jackson County. He died.

249. **Mona Marie FORGEY**, daughter of William Wray FORGEY and Isis Minerva BROWNING, was born on 29 July 1905 in Freetown, Jackson County, Indiana. She died.

250. **William R. FORGEY**, son of Leander FORGEY and Agnes BRADEN, was born in December 1881 in Jackson County. He died.

251. **Clyde W. FORGEY**, son of Leander FORGEY and Agnes BRADEN, was born in November 1883 in Jackson County. He died.

252. **Cline W. FORGEY**, son of Leander FORGEY and Agnes BRADEN, was born in December 1885 in Jackson County. He died.



Cline W. FORGEY, Clyde and William Braden School

253. **John C. FORGEY**, son of Leander FORGEY and Agnes BRADEN, was born in May 1890 in Jackson County. He died.
254. **Ruth H. FORGEY**, daughter of Leander FORGEY and Agnes BRADEN, was born in January 1893 in Jackson County. She died.
255. **James E. FORGEY**, son of Leander FORGEY and Agnes BRADEN, was born in April 1895 in Jackson County. He died.
256. **Flora E. FORGEY**, daughter of Leander FORGEY and Agnes BRADEN, was born in October 1897 in Jackson County. She died.
257. **Gladys May FORGEY**, daughter of Leander FORGEY and Agnes BRADEN, was born in February 1900 in Jackson County. She died.
258. **Carrie W. FORGEY**, daughter of Leander FORGEY and Agnes BRADEN, was born in 1903 (approx.) in Jackson County. She died.
259. **Vinnie FORGEY**, daughter of Leander FORGEY and Agnes BRADEN, was born in 1905 (approx.) in Jackson County. She died.